



INTELLIGENT **RISK** SOFTWARE

**STARTING A SESSION**

**SOLO MOBILE APP**

## [DISCLAIMER]

---

This presentation document has been prepared by Vault Intelligence Limited ("Vault") and is intended for off line demonstration, presentation and educational purposes.

The information is not version controlled and as such is subject to change without notice.

Vault does not accept any responsibility or obligation to inform users of this presentation of such changes.

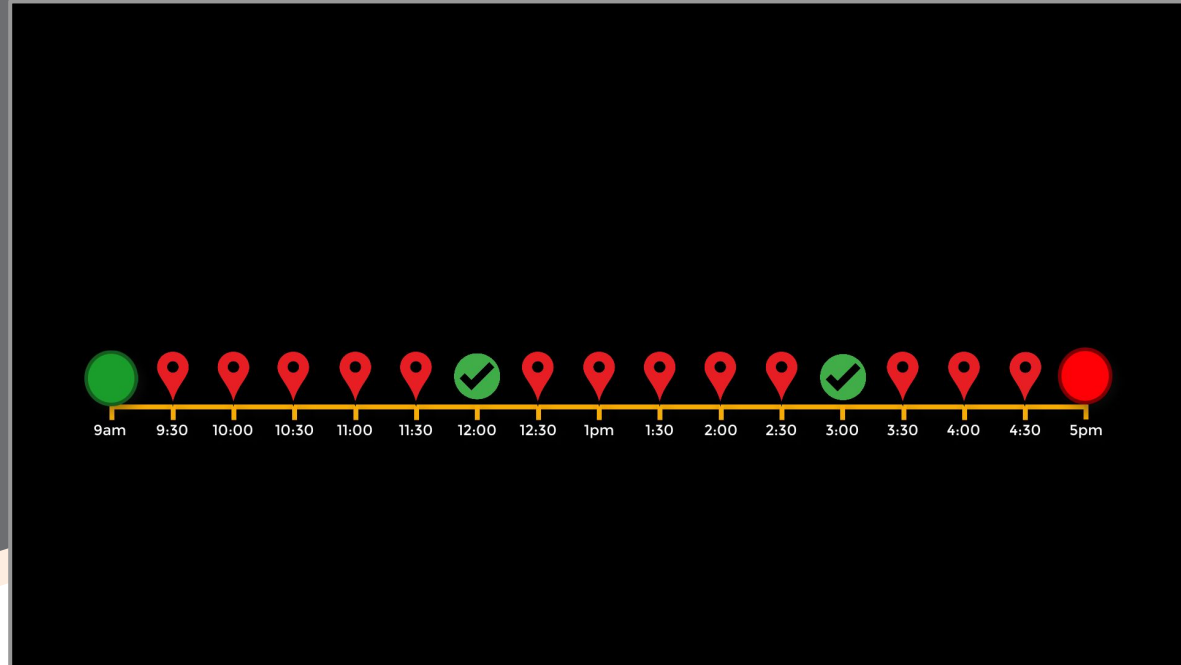
This includes any copies of this presentation taken and modified outside of the Vault domain.

# [Start Session] Introduction



A *Session* is a period of time started and ended by you as the Solo Mobile user, during which Solo may share your location with your Organisation and prompt you to confirm that you're safe - that is, *check in*

This guide shows how to start a Session



# [Start Session] Starting a New Session

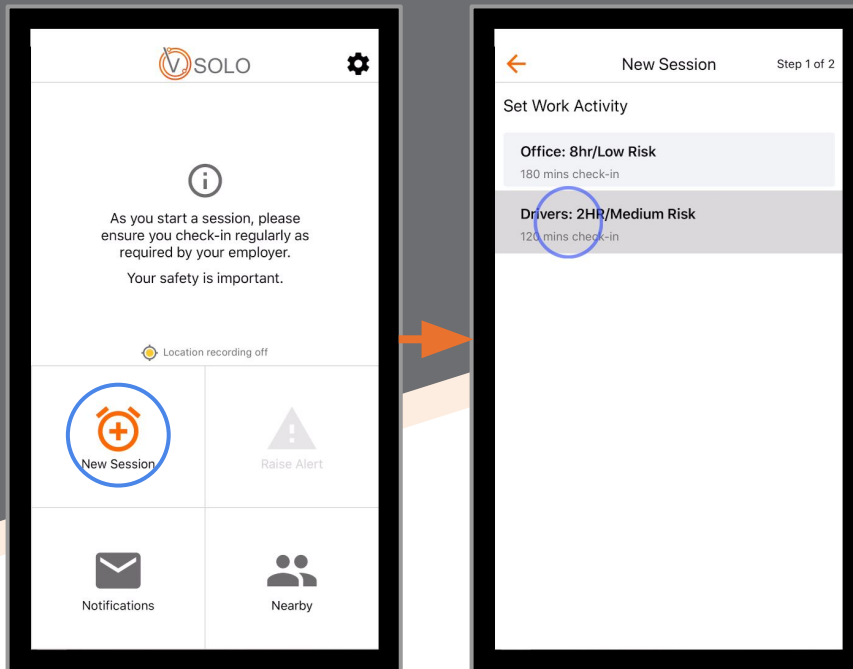


From your smart device, **tap** the Solo Mobile app icon

**Tap** the *New Session* icon

From the session profile list, **tap** the profile that you'd like to use

**Note** that your options will differ from the ones shown here. Contact your system administrator if you're unsure which profile to select



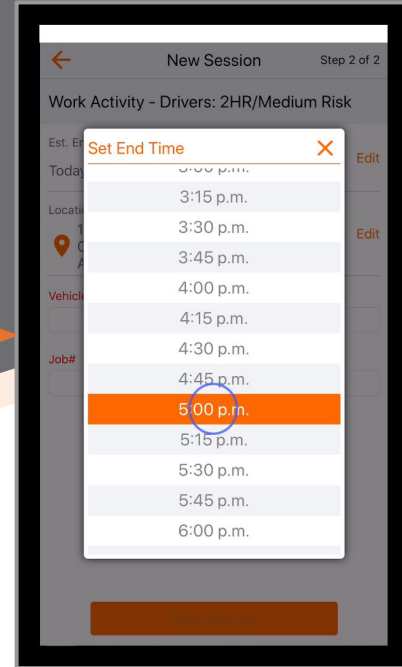
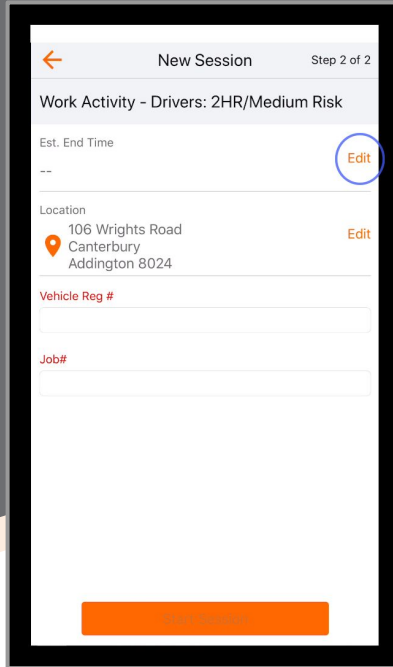
# [Start Session] End Time



Depending on the profile selected, additional options may now appear.

If you'd like to indicate an estimated end time for the session, **tap Edit** in the *Est. End Time* field and **tap** the finish time

The selected finish time will now populate into the field and you will be prompted to finish the session once the selected time is reached



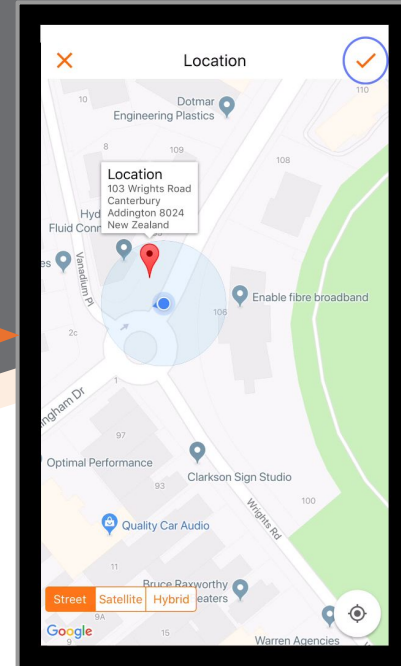
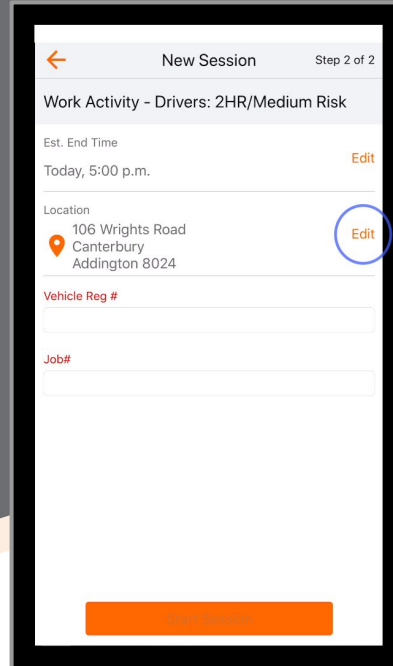
# [Start Session] Set Starting Location



The *Location* field will be populated with your current location once a GPS signal has been acquired by the device

Ensure that the location is correct. If not, **tap Edit** and **drag** the *location pin* to the correct location

**Tap** the *tick* to save the new location



# [Start Session] Additional Information



Depending on the settings for the Profile selected earlier, additional fields may be displayed

These fields may be labelled differently from the ones shown here, or may not be present at all

To provide the information being requested, **tap** in the required session information field and **enter** the information via the device keyboard

**Repeat** this procedure for all session information fields

Once all fields are populated, **tap** *Start Session*

This screenshot shows the 'New Session' form at Step 2 of 2. The form includes the following fields: 'Work Activity - Drivers: 2HR/Medium Risk', 'Est. End Time' (Today, 5:00 p.m.), 'Location' (103 Wrights Road, Canterbury, Addington 8024), 'Vehicle Reg #' (empty), and 'Job#' (empty). A blue rectangular box highlights the 'Vehicle Reg #' and 'Job#' fields. At the bottom, there is an orange button labeled 'Start Session'.

This screenshot shows the 'New Session' form at Step 2 of 2, identical to the previous one but with the 'Vehicle Reg #' field populated with 'HSH652' and the 'Job#' field populated with '175527'. A blue circle highlights the 'Start Session' button at the bottom.

# [Start Session] Session Started



The session has now commenced and the Solo app will begin communicating your safety with your Organisation

